



---

# SPRING LEAGUE 2026

---

Policies, Procedures,  
Contacts and Schedules

---

[www.broomesoccer.org](http://www.broomesoccer.org)



---

# Table of Contents

---

<i>Section</i>	<i>Subject</i>	<i>Page</i>
<i>Section 1</i>	<i>BCSA Organization</i>	5
	BCSA Constitution and By-Laws	5
	Code of Conduct	7
	Governing Body	7
<i>Section 2</i>	<i>BCSA Policies and Procedures</i>	8
<i>Section 3</i>	<i>Local Rules of Competition</i>	13
	Under 14 - Under 19	13
	Under 12	14
	Under 12 Field Sizes	15
	Under 10	16
	Under 10 Field Sizes	17
	Under 8	18
<i>Section 4</i>	<i>Cautions and Send Offs</i>	20
<i>Section 5</i>	<i>Coach and Manager Responsibilities</i>	21
<i>Section 6</i>	<i>Age Group Coordinator Responsibilities</i>	22
<i>Section 7</i>	<i>Club Field Coordinator Responsibilities</i>	22
<i>Section 8</i>	<i>Referees</i>	23
<i>Section 9</i>	<i>Referee Fees and Team Fines</i>	23
	Guide to Assault on a Referee	24
	New York State West Zero Tolerance Policy	25



---

# Constitution & Bylaws of the Broome County Soccer Association

(Approved 10/3/2013)

---

## Constitution

### Article I- Association Name

The name of this association shall be the Broome County Soccer Association, hereinafter referred to as “BCSA” or the “Association”.

### Article II- Structure

#### Part 1. Mission

It is the mission of BCSA to foster the growth of youth, through the sport of soccer for individuals under the age of nineteen. BCSA shall be responsible for the administration and management of mission related activities within its designated geographic area.

#### Part 2. Establishment

BCSA shall be established as a non-profit organization.

#### Part 3. Headquarters

The headquarters of BCSA shall be located in Binghamton NY. All correspondence to the organization shall be sent to the home address of the president of the association.

#### Part 4. Affiliation

BCSA will be affiliated with the New York State West Youth Soccer Association (NYSWYSA), The United States Youth Soccer Association (USYSA) and the United States Soccer Federation (USFF).

#### Part 5. Duration

The duration of BCSA shall be perpetual.

#### Part 6. Dissolution

In the event the BCSA dissolves, any funds remaining in treasury, after the payment of all its obligations, will be transferred to another organization or organizations duly qualified under Section 501(c)(3) of the Internal Revenue Code.

### Article III- Association Membership

Clubs in good standing with a state association of the United States Soccer Federation that wish to become members of BCSA by entering teams into it's league and agree to it's constitution, bylaws and procedures shall be eligible for membership. All members must keep the secretary and league coordinator of BCSA aware of the methods that can be used to contact the member club's officers for all related communications sent by the league to its members which will include the notification of meeting dates, times and locations.

### Article IV- Association Management

#### Part 1. Board of Directors

The Board of Directors consists of each member club president or their appointed designee. Appointment of a designee shall be by proxy filed in advance of any meeting signed by the president of the club and shall not expire but can be replaced by a subsequent proxy.

#### Part 2. Executive Committee

The Board of Directors shall elect at the Annual General Meeting an Executive Committee which shall consist of the following officers: President, 1<sup>st</sup> Vice President, 2<sup>nd</sup> Vice President, Secretary, Treasurer and League Coordinator. These officers shall serve a term of one year. No club shall have more than one member on the executive committee.

#### Part 3. Fiscal Year

The fiscal year of BCSA shall be from September 1st to August 31st

#### Part 4. Records of the Association

The records of the association shall be maintained by the officers of the association.

### Article V- Meetings

#### Part 1. Quorum at any meeting

A quorum shall exist when:

- a) If one-half plus one member of the Board of Directors are represented.
- b) If method (a) above does not produce a quorum then a quorum shall exist if at least 4 members of the Executive committee are present
- c) Voting at the meeting shall depend upon the quorum. If the Board of Directors quorum exists, then a majority vote will consist of one-half plus one member of the Board of Directors that are present. If the Board of Directors quorum does not exist but the Executive Committee quorum does exist then a majority vote would be 3 votes from the Executive Committee.

No quorum shall exist unless all members of the association were given notice of the meeting at least 10 days prior to the meeting date by any means, written or electronic, to the address, email address or phone number given by each member of the board of directors and executive committee to the secretary.

The date, time and location of or method used to conduct any meeting will be determined by the Executive Committee of the BCSA.

#### Part 2. Regular Meetings

BCSA business shall be transacted at meetings that shall be held at least three times per year.

#### Part 3. Special Meetings

Special meetings shall be called as required by the President, by a majority vote of the Executive Committee or by a majority vote of the Board of Directors. All meetings shall be open to the public.

#### Part 4. Annual General Meeting

There shall be an Annual General Meeting once a year, held the first Thursday of October. Notice shall be sent to member clubs at least ten days before this date.

### Article VI- Amendments

#### Part 1. Amendments and Changes to the Constitution

The Constitution may only be amended at the Annual General Meeting, by a two-thirds majority of the votes cast, a quorum being present, provided notice was given to each member of the Board of Directors and the Executive committee of the proposed amendment or change at least ten days prior to the meeting.

## By-Laws

### Article I - Membership

#### Part 1. New Membership

Any Club seeking to become a member of BCSA must petition the President of the association in writing. The request for membership must be received ten days prior to a meeting of the association. New membership will be decided upon by the voting members present at such meeting with a majority vote, a quorum being present, required for approval. The Executive Committee may set criteria for the club to meet before granting membership in BCSA. Upon acceptance, the new member's president shall identify to the secretary and the league coordinator the address, phone number and email address of the president, vice-president, treasurer, registrar and field coordinator for their club within 30 days of acceptance as a member of BCSA.

#### Part 2. Renewal of Membership

Membership of all clubs in BCSA shall be perpetual unless one of the following conditions occur:

- a) The current club president notifies the BCSA president of it's desire to withdraw its membership, **or**
- b) The club does not enter any teams into a league managed by BCSA for a period of two years.

#### Part 3. Suspension of Members

The association may, at a duly called meeting, a quorum being present, suspend from membership, or expel, any individual, team or Club that:

- a) Willfully refuses or neglects to fulfill any of its obligations as a member and violates any of the provisions of the Constitution, By-Laws, or Rules and Regulations or Procedures of the Association.

- 
- b) Commits any act that is inconsistent with the principles and standards of sportsmanship.

A vote to suspend shall require two-thirds vote of the Board of Directors. A member shall have the opportunity to show cause why such action should not be taken. A suspended member may reapply for membership in the BCSA based upon the criteria established by the Executive Committee.

*Part 4. Equal Opportunity*

Membership in BCSA shall be open to any soccer club that is in good standing with its USYSA state association, USYSA and USSF.

**Article II- General Responsibilities**

- a) The USSF articles of incorporation, bylaws, policies, and requirements take precedence over and supersede the governing documents and decisions of the BCSA to the extent applicable under state law, and the BCSA will abide by those articles, bylaws, policies, and requirements.
- b) The BCSA will abide by the USSF articles, bylaws, policies, and requirements on interplay.
- c) The BCSA will provide equitable and prompt hearing and appeal procedures to guarantee the rights of individuals to participate and compete. These procedures shall include that all grievances involving the right to participate and compete in activities sponsored by the USSF, USYSA, NYSWYSA and BCSA may be appealed to the USSF's Appeals Committee in accordance with NYSWYSA bylaws and policies. The USSF's Appeals Committee shall have jurisdiction to approve, modify or reverse a decision. A decision rendered by the BCSA or the NYSWYSA from which an appeal is taken is not suspended pending the final decision of the USSF's Appeals Committee unless the committee otherwise orders. The decision made by the BCSA or the NYSWYSA may be upheld, revised or reversed and remanded.

**Article III- Officers**

*Part 1. Term of Office*

Members of the Executive Committee shall serve for a term of one year and may succeed themselves.

*Part 2. Duties of Officers*

- a) The President shall be the executive officer of BCSA and shall serve as chairperson of all meetings. The President may establish committees and appoint members to committees. The President shall serve as the official representative of BCSA in all its matters and can hold other powers as granted by the Procedures of the organization. The President may recruit and assign members, who will have no voting power, to assist the Board and its members.
- b) The 1<sup>st</sup> Vice President shall succeed to the office of the President in the event the office becomes vacant. In the absence or disability of the President the 1<sup>st</sup> Vice President shall perform the duties of the President.
- c) The 2<sup>nd</sup> Vice President shall succeed to the office of the President in the event the office of both the President and the 1<sup>st</sup> Vice President are vacant. In the absence or disability of the President and the 1<sup>st</sup> Vice President, the 2<sup>nd</sup> Vice President shall perform the duties of the President.
- d) The Secretary will be the official custodian of all correspondence and documents of the Association.
- e) The Treasurer shall be the officer responsible for the Association's finances and report at each meeting the financial condition of the BCSA.
- f) The League Coordinator shall be responsible for recruiting and directing Age Group Coordinators as needed, for the operation of the Association's leagues and enforcement of its policies and shall be responsible for developing all BCSA league schedules.

*Part 3. Removal from Office*

An officer may be removed for due cause by two-thirds vote, a quorum being present, by the Board of Directors.

*Part 4. Resignation of a Officer*

Should an officer resign, the President shall appoint a successor to complete the term of the officer. If the president resigns, he shall be replaced by the vice-president.

---

**Article IV- Committees**

*Part 1. Past Presidents of the BCSA*

All past Presidents of the Board of Directors shall be eligible to serve in an ex-officio, non-voting capacity as advisors to the Executive Officers and members of the Board of Directors provided that they are in good standing with BCSA, NYSWYSA, USYSA and USSF.

---

*Part 2. Other Committees*

The BCSA president shall appoint members to any committee as directed by either the Board of Directors or the Executive Committee as needs arise.

**Article V- Amendments**

The By-Laws may be amended by a majority vote at any regular meeting according to article 5 of the constitution of BCSA.

**Article VI- Appeals**

*Part 1. Decisions or actions that may be appealed.*

- a) There shall be two general types of decisions or actions that may be appealed-Association decisions and League decisions.
- b) An Association decision would be any decision rendered by the Board of Directors or Executive Committee as a whole. These would include but not be limited to placing a member club in bad standing with the league, expulsion of a member club or a decision to revoke a member club's bond. An appeal of an Association decision must be filed in accordance with the procedure outlined in Article VI, Part 3 below within sixty (60) days of the decision or action being appealed.
- c) A League decision would be any action to enforce league policies or procedures taken by an age group coordinator, officer, or any group of officers of the league in relation to a league or match incident. These would include but not necessarily be limited to a forfeit; a team, player, coach or spectator fine; a send-off penalty greater than the USSF mandated minimum of one game or a decision rendered by a protest committee. An appeal of a League decision must be filed in accordance with the procedure outlined in Article VI, Part 3 below within seven (7) days of the decision or action being appealed. The League Coordinator cannot serve as a member of an appeal committee if the action being appealed falls under this section of the Bylaws.

*Part 2. Appeals Committee*

- a) The BCSA President shall appoint an Appeal Committee to hear each appeal. The Appeals Committee shall consist of at least three (3) individuals plus a Chairperson. The Appeals Committee shall be responsible for investigating and hearing any accepted appeal of actions taken by the BCSA league or its officers. The President shall have the right to act as the Chairperson of the Appeals committee except as noted in Article VI, Part 2, section b below.
- b) No member of the Appeals Committee may have a conflict of interest with any party of the appeal.
- c) The Appeals Committee Chairperson may only vote on an appeal in order to break a tie.

*Part 3. Appeals Filing Procedure*

- a) The appeal must be in writing and describe in detail the grounds for the appeal.
- b) The written appeal and appeal fee must be sent certified mail to the BCSA President so that it is received within the time frame specified in Article VI, Part 1 above.
- c) The appeal fee, payable to BCSA, in the form of money order, cashier's check or certified check shall accompany the appeal. The appeal fee is refundable if the appeal is upheld, or at the discretion of the Appeals Committee. The appeal fee is \$50.00 US Funds. (NO CASH)
- d) The Appeals Committee shall have the right to decline a hearing if the information necessary to make a fair and just decision on the appeal has not been furnished, or the proper procedures have not been followed in filing the appeal.

*Part 4. Hearing of Appeals*

- a) The BCSA President shall set a date for the hearing within two (2) days from the receipt of the appeal. The date of the hearing shall be within ten (10) days from the receipt of the appeal.

- b) The Chairperson has the right to limit the speaking time or number of witnesses to be heard from each party to the appeal at the hearing.
- c) The Chairperson shall submit the decision of the Appeals Committee to the appealing party and the BCSA President in writing within 48 hours of the hearing.
- d) Appealing parties have the right to appeal the decision of any BCSA Appeals Committee to New York State West Youth Soccer Association.

---

## Code of Conduct of the Broome County Soccer Association

---

The Broome County Soccer Association Spring League is based on the objective of providing the youth of the Southern Tier of New York with the opportunity to acquire and develop skills through a higher level of competition. These skills, as well as the individual growth of players, must be nurtured in an environment which is free of confrontation, poor sportsmanship, and verbal and physical abuse among spectators, game participants and game officials.

Not only is this type of behavior contrary to the spirit of the game and examples we are trying to set for the participating youth, it also creates situations which could place BCSA in bad standing with New York State West thereby threatening the continuation of high level competition in the Southern Tier of New York.

While BCSA does not dictate the internal administrative rules and regulations of member clubs, it must provide the framework for governing undesirable behavior within which member clubs must administer their teams.

Players are expected to perform in a manner consistent with the principles of good sportsmanship. Coaches and spectators should act in a manner which reinforces this concept. While aggressive play should not be discouraged, physical and/or verbal abuse of opponents will not be allowed. Verbal or gesticulative dissent with referee's decisions will not be tolerated.

If carded, a player is expected to observe the presentation of the card without comment, and the player should be determined not to repeat the behavior which elicited the card. Coaches, parents and spectators must also show respect in disagreeing with referees' decisions. While one cannot expect all referee calls to be accepted without reservation, loud or abusive dissent is unwarranted and reprehensible.

Under no circumstances should a player, parent or spectator come onto the field unless invited by the referee. The same level of constraint should be observed after the game is over. Parents and spectators should be made aware that the coach is responsible for their actions on the sideline, and can be warned, dismissed or suspended from future games for their misbehavior.

Member clubs will ensure that the approach to playing the game, which is discussed above, is fully disseminated and understood throughout their club. Member clubs will also establish internal procedures, consistent with each clubs' regulatory process, which provide for suitable controls and punishment for proscribed behavior.

Each club must also ensure that, as warranted by specific events, swift and appropriate action is taken to ensure that members of its club do not repeat their mistakes. Repetition of occurrences of misconduct which shows a disregard for these guidelines could lead to long term penalties.

***BCSA Board of Directors***

---

## Governing Body of the Broome County Soccer Association

---

### **President**

Bill Mizera 607-222-1725  
10 Pamela Drive jcxssoccer@aol.com  
Johnson City, NY 13790

### **First Vice-President**

Julian Drelich, Jr. 607-334-5038  
17 Beebe Avenue jdrelich@roadrunner.com  
Norwich, NY 13815

### **Second Vice-President**

Kyle Adriance 607-661-9839  
58 E. Lawrence Road kadriance17@gmail.com  
Lawrenceville, PA 16929

### **Treasurer**

Victor Lourenco 607-786-5984  
41 Mountain Brook Drive lourenco@us.ibm.com  
Vestal, NY 13850

### **Secretary**

Julie Randall 607-345-4005  
747 Rt 222 soccerref2323@gmail.com  
Cortland, NY 13045

### **League Coordinator**

Julie Randall 607-345-4005  
747 Rt 222 soccerref2323@gmail.com  
Cortland, NY 13045

**BCSA WEB SITE:** <http://www.broomesoccer.org>

## ***Other Soccer Contacts***

### **Binghamton District Commissioner**

Kevin Arnold 607-756-6528  
11 Randall Street karnold@nyswysa.org  
Cortland, NY 13045

### **NYSWYSA Office**

1200C Scottsville Road 800-789-4806 (In NY Only)  
Suite 350 607-962-9923  
Rochester, NY 14624 Fax: 607-962-0525  
office@nyswysa.org

### **ENYSA Office**

167 Nassau Boulevard 516-766-0849  
Garden City S, NY 11530 Fax: 516-678-7411  
info@enysoccer.com

---

# Policies and Procedures

---

## **GENERAL**

This league will be known as the Broome County Soccer Association or BCSA. BCSA is affiliated with FIFA, USYSA and NYSWYSA. Only teams affiliated with BCSA member clubs can play in BCSA leagues.

The philosophy of BCSA is players want to play games. Parents want to see their children play games. The players will not improve their skill level by not playing games.

Teams must be registered with New York State West Youth Soccer Association (NYSWYSA) or an approved National State Association affiliated with the United States Youth Soccer Association (USYSA).

All games shall be officiated by referees who are registered with USSF.

The spring season will run from April through June. The schedule is designed with the following factors considered:

- Availability of players to play games
- Travel time of teams
- Field availability
- Referee availability
- Conflicts with school events
- State Cup, President Cup and Cup play down matches
- Club or team requests
- All teams will play 8 games.

## **CLUB RESPONSIBILITIES**

Clubs are solely responsible for the actions of all participants entering the league through that club. This includes but is not limited to teams, coaches, players and other support personnel.

The participation fee in the BCSA Spring League is \$60 per team for teams using Binghamton Group Soccer Referees (BGR) for assigning referees to games and \$35 per team for teams using another referee assignor or referee association. All Under 8 teams are charged \$35 regardless of which referee association is used. BCSA reserves the right to charge a higher participation fee to teams entering from state associations other than NYSWYSA if there are associated costs with accepting those teams. BCSA will pay the assigning fee for clubs using BGR as established in the current contract. The league fee, regardless of cost, must be paid on or before the date of the annual coaches meeting, typically held in mid-March. Fee must be paid to "BCSA" with a single club check for all teams entering the league from that club and must be delivered to the league treasurer. If the fee is not paid with a "club" check, the club's name must appear on the memo field of the check. Failure to pay this fee will result in the club being put in bad standing with the league at the next scheduled meeting. Other than BGR, referee associations that provide referees for BCSA league games may charge an assigning fee to member clubs whom they serve. It is not the responsibility of the league to track which teams have paid participation fees, only how much was paid by each club.

Fines are assessed to member clubs throughout the season due to performance deficiencies of teams and players registered with said club. These fines are due within 14 days of the date the fine was incurred. Fines may be paid by either a club check or personal check from the offending party but in all circumstances must be made out to "BCSA" and mailed to the league treasurer. All fine payments MUST be accompanied with a notation of the game number (if appropriate), team, and player (if a send off) for

whom the fine is being paid. This notation can either be on the memo line of the check or as a separate note included with the payment. BCSA assumes no responsibility for payments made without proper notation included.

The club shall be responsible for any checks from participating members that are not honored by the financial institution upon which the check was drawn. Any checks returned to BCSA from a financial institution shall incur a \$50 service fee that will be added to the fine or participation fee originally charged. The league may refuse to accept any future payments made from said participant or financial institution at the discretion of the treasurer.

## **AGE GROUPINGS**

The BCSA Spring League is comprised of the following age groups: Under 8, Under 10, Under 12, Under 14, Under 16 and Under 19. Eligibility to play in any age group will be determined by USSF, USYSA and NYSWYSA standards. Each age group shall be separated into a girls and boys conference except for the Under 8 age group. Divisions within an age group shall be determined by the Age Group Coordinators and the League Coordinator on advice from the coaches.

A player's age is determined by policies set forth by USSF, USYSA and the USYSA state associations.

## **TEAM REGISTRATION**

For purposes of determining fines, send-offs, and forfeits in BCSA; a "team" shall be defined as any entity entering any single division. Teams entering state cup or looking to have league support in promotion to a premier league must participate in the highest division of whatever age group they enter. A team is not prohibited from entering more than one division or age group. Players are not allowed to be rostered on more than one team in any single division at the Under 14 or higher age groupings.

## **TEAM ROSTERS**

### **ROSTER LIMITS:**

GUEST PLAYERS are not allowed to participate in BCSA matches in any age group. All players must appear on the team roster.

Under 8, Under 10 and Under 12 have no roster limits. The roster is a "recreational roster," must be in the state approved format, and be approved by the club registrar.

All other rosters must be "certified rosters" and as such must meet the certification criteria established by the USYSA state youth association in which the team is domiciled. Certified rosters must bear a state stamp, seal or signature of approval.

### **CHECK IN LIMITS:**

Under 8 has no player check in limits.

Under 10: Only the first 11 players who check into any match may participate in that match.

Under 12: Only the first 13 players who check into any match may participate in that match.

Under 14 through Under 19: Only the first 18 players who check into any match may participate in that match.

Any changes and/or questions regarding team rosters shall be submitted to the League Coordinator.

A player may play for more than one team provided the requirements of USYSA and the National State Association the player is registered with for multiple registrations are met. In BCSA however, no player can play for more than one team at

---

the same level of competition. Level of competition in BCSA in this case means a player cannot be simultaneously rostered for 2 different teams in the same division. This restriction does not apply to U8, U10 and U12 teams.

A maximum of three non-players or non-substitutes will be allowed on the team side of the field. Anyone who is not a player on the team MUST have a valid USYSA State Association Risk Management pass. Furthermore, there must be one adult (age of 21 years or greater) on the team side of the field the entire time the team that they are on the field, including the warm-up time before the match until all of the players leave the field. Any youth coaches on the team side MUST carry a valid USYSA State Association Risk Management pass which identifies them as an Under 21 coach. Should the league subsequently find that a youth coach is participating with an adult Risk Management pass, it will carry the same penalty as a send off from the match. The league also reserves the right to take further action against the club that sponsored the team.

### ***PLAYERS PARTICIPATING ON TEAMS OLDER THAN THE PLAYER'S AGE:***

BCSA, due to the constraints of the size of the area we serve, is limited to only offering the following age groups for league play: Under 8, Under 10, Under 12, Under 14, Under 16 and Under 19. By our definition, an Under 9 player playing on an Under 10 team would NOT be playing up since that would be the only age appropriate team on which that player could participate. Only if that player was playing for a team or teams that are more than one year above the player's age would we consider that player to be playing up an age group. In general, BCSA has no policy about players who are playing up an age group or more. A Parental Waiver Form must be kept at the club level, signed by the parents or guardians of that player. The Parental Waiver form that the club should use can be found on the BCSA website under Forms.

If, however, any player that is classified as Under 11 or below is playing for any team that is Under 12 or above, that player IS NOT ALLOWED to head the ball either in practices or in games. Neither the league nor match officials can possibly enforce this rule therefore it is up to the coach and the player's parents or guardians to carefully instruct that player to avoid heading the ball at all times. The risk of concussion to any player that is Under 11 or below is significantly greater than it will be to his or her teammates that are Under 12 or above in this situation. The responsibility for enforcement of this policy rests squarely and solely with the club that is sponsoring the team and that team's coaches and parents. BCSA will not be liable for any injuries sustained by a young player put into that situation by the sponsoring club, its coaching staff or the parents or guardians of said player.

### ***PARTICIPATION PASSES AND ROSTERS***

#### ***PLAYERS PASSES:***

All players (on teams older than U12) must have a player's pass bearing the approved mark of the USYSA State Association Registrar, and sealed with a photo of the player that is no more than 2 years old, in order to participate in any BCSA game and/or be on the team sideline. The pass need not be signed by the player.

#### ***TEAM OFFICIALS PASSES:***

All team officials must possess a valid USYSA State Association Risk Management Pass. If a team official comes from a state that either does not have a Risk Management program or if the team official is less than 21 years old and cannot obtain a Risk

Management pass from their home state, they must apply to NYSWYSA for a pass in order to be on the team sideline during any BCSA match.

If a team official is 21 years of age or older, he or she must possess a valid USYSA State Association Risk Management pass, bearing the approved mark of the USYSA State Association Risk Management officer, signed by the team official, sealed with a photo of the team official that is no more than 2 years old.

If the team official is less than 21 years of age, the team official must possess a valid USYSA State Association Risk Management pass, bearing the approved mark of the USYSA State Association Risk Management officer, signed by the team official, and stamped by the State Risk Management Officer indicating that the team official is not as yet of age. A photograph of the team official does not need to be affixed to the pass in this case.

No game may start or continue unless there is at least one team official for each team that possesses a valid Risk Management pass and is 21 years of age or older present on the team's sideline.

#### ***PLAYERS AND TEAM OFFICIAL PASSES AND GAME ROSTERS:***

Teams that are participating in any age group that is Under 12 or below must present the referee crew with a recreational roster in the format approved by their home state association. Teams that are participating in any age group that is Under 14 or above must present the referee crew with a USYSA State Association certified team roster listing all players. Referees are to check to be certain that the passes and the roster match. Guest players are not allowed to participate in any BCSA match. At the conclusion of the match the roster will be returned to a team official. Any team official may be on the team sideline without being on the roster however they MUST have a valid USYSA State Association Risk Management pass. BCSA does not at any point freeze team rosters during the season.

There are no exceptions to the rules regarding passes and rosters above except as stated herein. Rules regarding passes are not to be interpreted and must be strictly enforced by all referees at all BCSA league games, including the games on opening weekend.

Any team appearing without full documentation shall be deemed as forfeiting the game and will be fined the forfeit penalty plus applicable referees fees per occurrence except as noted below. Any individuals who do not possess a valid pass will not be allowed to remain on the team side of the field.

In the event that a team appears at a game site with passes but without the certified roster, a neatly printed roster with the players' names and pass numbers shall be given to the referee who, in turn, will file a report with the League Coordinator attaching said roster to the report. A \$5 fine will be imposed on the team for each such instance. NOTE: This rule exception only applies if all players have USYSA State Association passes.

There will be a 15 minute grace period at the beginning of the match for each team and team official to present their required documentation or the game shall be deemed a forfeit to all parties who were unable to provide the proper and required documentation. The game shall not start until the documentation is complete. If a team official at the game site refuses to provide said documentation AND said team is not at full strength BUT has enough players to start the match (typically 7), the referee shall have the authority to abandon the match and the match shall be considered a forfeit. DOCUMENTATION SHALL NOT

---

BE USED AS A DELAYING TACTIC. If a team official is not normally going to be the person responsible for providing the required documentation, they must carry with them a photocopy of all pertinent documentation that may be used to check the team into the match should the person who normally carries the documentation be delayed arriving at the match site, BUT the originals of all of the required documentation must be provided at halftime or the match shall be deemed a forfeit. In said case the match may be completed as a scrimmage. In any case, the team officials must always have the original risk management pass. No photocopy of said Risk Management document will be considered valid.

If for whatever reason, a team is unable to have an adult with a valid Risk Management pass on the team side of the field at any point during a match, the game shall be terminated and considered a forfeit by said team with all the penalties that any forfeit implies.

*NOTE: Adults who are properly on the sideline with the team will be responsible for the actions of all members of the team; including youth team officials. Should an adult team official refuse or be unable to control the actions of his or her team, the game shall be terminated and the adult team official will automatically be penalized for failure to control the bench area. This penalty shall be the same as if the team official had been sent off from the match.*

#### **REFEREES' PASSES:**

All referees that are assigned to officiate BCSA league matches are required by USSF to be certified in the current year and assigned to said match by a USSF Certified Assignor; and are required by NYSWYSA to have a current and valid risk management pass. Referees on BCSA matches within the boundaries of NYSWYSA are also required by NYSWYSA to possess said pass at all games they officiate. If the referee is an adult, the pass must bear the seal of the USYSA State Association Risk Management officer, be sealed with a photograph of the referee that is not more than 2 years old and be signed by the referee. If the referee is not yet 21 years old, the pass must still bear the signature of the USYSA State Association Risk Management officer and stamped that the referee is not as yet of age but need not be signed by nor bear any photograph of the referee.

Under certain conditions described below, coach or other adult bench personnel who is listed on the team roster may request to see the referees' passes.

1. The team official must first present the team roster and his or her Risk Management pass to the referee so that the referee can validate that the team official is allowed to make the request.
2. The match must be taking place within the territorial boundaries of NYSWYSA. A team official has no right to see the passes of any referees outside of those boundaries regardless of where said referee is domiciled. Should such a request be made, the team will be completely responsible for any action the league takes because of said inappropriate request or subsequent actions of the team officials or the team.
3. The team official must request to see the passes prior to his or her team taking the field at the start of the match. No request made after that time shall be honored and may be construed by the referee as irresponsible behavior by the team official and punished as such by both the referee and BCSA

4. If the referee does not have his or her pass with them, the team official has several options:
  - a) Since referees are required to be assigned to matches by a USSF certified assignor, and all certified assignors have a listing of all referees' risk management status, and are prohibited by NYSWYSA to assign an official to any match that does not possess a valid risk management pass; it can be assumed that the referee does possess a pass but neglected to bring it to the game.
  - b) The team official may decide to play the game with said referee and report the absence of a referee pass to the state association. The league does not have the authority to take any action in said cases but should be informed of the action via email to the League Coordinator. Such action will not be considered grounds for a protest of the match result, any incidents that took place during the match nor decisions made by the game officials during the match.
  - c) The team official may decide to not allow said referee to participate. If there are no other adults with a current risk management pass in attendance at the game who are willing to take said referee's place, the game will be abandoned with no penalty to the team but said match MUST be rescheduled according to BCSA policies which may involve a financial risk to the team if the game is not so rescheduled. Note that by USSF policy under no circumstances can an uncertified volunteer in said circumstance replace the referee. They can only assume the position of a club lines person. The team official can report the absence of a referee pass to NYSWYSA. The league does not have the authority to take any action in said cases but should be informed of the action via email to the League Coordinator.
  - d) The team official may decide to not play the game. Note that any match played without a certified official assigned to the match in accordance with USSF policies cannot in any way be treated as an official match by BCSA. In said instances, the team will not be penalized for refusing to play the match BUT may be penalized if the match is not rescheduled according to BCSA policies. The team official can report the absence of a referee pass to NYSWYSA. The league does not have the authority to take any action in said cases but should be informed of the action via email to the League Coordinator.

#### **TEAM PERFORMANCE**

Teams will not be required to provide performance bonds. For each performance deficiency (forfeit, reporting failure, etc.) a fine will be charged to the club sponsoring said team. The club must pay each fine within 14 days of the date incurred in order to remain in good standing with the league. If a second game is forfeited the team will be expelled from the league. Any team that either withdraws from the league or is expelled shall expose its sponsoring club to a \$200 fine in addition to all fines incurred by the team up to the point of withdrawal or expulsion. BCSA encourages each club to collect bonds from those teams the club feels are at risk for incurring charges. It is recommended that the older teams (U19 and U16) post bonds with the club of at least \$200.00. All forfeits shall also be deemed a game cancellation. BCSA does not recognize individual teams as members and cannot charge a team for a fine. All fines incurred by teams are the sole responsibility of the club sponsoring the team.

---

## **TRANSFER OF PLAYERS**

Player transfers shall follow the rules imposed by the USYSA state association in which the club that the player is registered with is domiciled.

### **PLAYER ELIGIBILITY:**

Requests concerning player eligibility should be directed to the BCSA League Coordinator.

Investigation of player eligibility shall not be construed as a protest. For the good of youth soccer and BCSA, any questions concerning player eligibility must be reported within 5 days of the match in question. If it is found that an ineligible player checked into any match, all matches that player checked into shall be deemed to be forfeits by the team that checked said player in. This includes players in excess of the check-in limits for any game.

### **RESCHEDULING GAMES - CHANGES TO PRELIMINARY SCHEDULE**

The preliminary BCSA Spring League schedule will be distributed at the coaches' meeting typically held in mid-March. Each team coach/manager will have 2 weeks (free grace period) to review the preliminary schedule with their team and notify the League Coordinator and the Age Group Coordinator of any changes to this schedule. It is the team coach/manager's responsibility to notify the coach/manager of the other team and establish a new game date.

### **RESCHEDULING GAMES - CHANGES TO FINAL SCHEDULE**

*PLEASE NOTE: ALL GAME RESCHEDULES CONSIST OF A GAME CANCELLATION AND A GAME SCHEDULING.*

**After the 2-week grace period, only 3 changes can be made by each team as long as notification of the cancellation of the original match is received by the League Coordinator at least 5 days prior to that scheduled game to be changed.**

No request to cancel a game will be honored by the league with less than 5 days' notice unless the requesting team's club president requests the change of the league president and the league president agrees to allow the change. If this permission is not obtained, the game shall be either played or deemed a forfeit.

EXCEPTION: Games which must be rescheduled due to Cup play are not subject to the 5 day or 3 game limitations but will be subject to late cancellation or late scheduling fines.

To reschedule a game the team coach or manager MUST:

1. Contact the opposing team and mutually agree to cancel the original game and schedule a make-up game and notify the League Coordinator and Age Group Coordinator of the decision to cancel. (Remember-All game changes will consist of a game cancellation and a game scheduling. Either or both of these acts may involve fines.)
2. Contact the Field Coordinator for the game field to get dates and times the field may be available.
3. Arrange a make-up date acceptable to both teams and notify all persons listed above in a reasonable time cycle prior to the new date. Failure to notify the league in the proper time cycle will result in a fine.
4. For each game not made up, there will be a forfeit and fine will be assessed to the team or teams refusing or unwilling

to make up the game. The check for this fine is made payable to BCSA and sent to the BCSA Treasurer.

5. If the fine is not paid, the club sponsoring that team will be deemed 'not in good standing', which will prevent that club from entering any teams in any BCSA league until the fine is paid.

### **MAKE-UP GAMES**

Coaches are expected to work with each other and their Age Group Coordinator to arrange whatever convenient times may be available to make up their games.

All make-up games must be scheduled for a specified date within 2 weeks from the date of the decision to cancel. The game does not have to be played within the 2 weeks, but the new date must be established and recorded with the Age Group Coordinator within 2 weeks of the original game date. A forfeit fine will be paid by the team or teams refusing or unwilling to make up or reschedule the game. The check for this fine is made payable to BCSA and sent to the BCSA Treasurer.

If two teams decide to use State Cup matches or any local outdoor tournament as a BCSA league game, this decision on the part of both teams must be in writing to the League Coordinator before the Cup or tournament game takes place. Note: Prior to making this decision remember that tournament rosters generally allow up to 3 guest players (this means that the team roster for the tournament game may differ from the Spring League roster.) Also, one should consider that the rules for the tournament will take precedence in that game.

### **CANCELLATIONS**

Teams must play all games and be willing to travel. If a team refuses to travel to a game site, that team may be subject to sanctions in addition to the forfeit fine and/or late cancellation fines and may include expulsion from the league. The team will also have to apply for future acceptance into the league.

### **SCORING SYSTEM**

The following will be used to determine a winner for each division within an age group.

**WIN = 3 points    LOSS = 0 points    TIE = 1 point**

*No score or standings are kept for Under 8 or Under 10 games.*

Both team coaches are responsible for filing a game report for each match played in age groups above the Under 10 level. This report must be filed on-line at the internet address which will be provided to each coach by the respective Age Group Coordinators. Failure to report a match shall result in a \$5 fine assessed to any team not reporting any match. The match report will consist of the game score and a feedback form for each assigned referee. Each week, every game that is completed by Sunday midnight must be reported by 9:00 pm on Monday night immediately following that Sunday.

If teams are tied at the end of the season and they played 85% of their games, the division winner will be the winner of the head-to-head game. If the head-to-head game(s) was (were) indecisive then both teams will be declared champions. Score differential does not matter in BCSA standings. If one team forfeits, the result will be a 1-0 score for the team not forfeiting. If both teams are at fault, the result will be a 0-1 result for both teams.

If a team disbands or for any reason has not played 85% of its scheduled games, the games that the team played will not count for or against opposing teams.

---

*Example: A team has an eight-game schedule and played only three games that were all wins. The losing teams will drop those losses from their record. If the three games were all losses, the winning teams would drop the wins from their record.*

BCSA will provide 21 tees for each team that wins in an Under 12 Division and 25 tees for each team that wins a U14 or higher division in the spring league. These tees will be made available to the club sponsoring the team, but it is the responsibility of each club to collect those tees from the league coordinator.

### **FIELD CLOSURES**

All field closures caused by weather creating a playability issue with a given field can ONLY be decided by the home club field coordinator by 8pm of the evening prior to any BCSA match. This decision can only be based on the playability of the field at that point in time, not on future possible weather conditions. If the field is determined to be unplayable, the club field coordinator shall immediately notify the League Coordinator and all of the home team coaches and/or managers. It is the responsibility of the home teams impacted by such closures to notify each of the opposing teams that evening so that unnecessary travel can be avoided. If such a determination cannot be made by the time prescribed, the playability of the field will be a decision left up to the match official assigned to the game. Failure to duly notify the league coordinator shall constitute a failure to close the field.

### **PROTESTS**

All protests must be submitted in writing to the League Coordinator within one week of the game in protest. The league coordinator will then gather all facts related to the protest and make a ruling and inform the parties involved. If any party to the protest is unhappy with that ruling, they may appeal that ruling according to policy. Please note that a referee's judgment is normally not considered a valid reason for protest. Incorrect application of The Laws of the Game is considered valid reason for a protest. The game officials must be advised that the contest is being played under protest before the game is restarted from the protested event or the protest will be refused. Also note that the only successful outcome of a protest will be to have the game replayed from the beginning and that any send offs issued during the original match will still be enforced.

### **APPEALS**

Appeals can be made pertaining to rulings and actions taken by the league. All appeals must be filed within 1 week of the action or ruling being appealed. See the BCSA bylaws for the proper procedure.

### **RAIDING**

While BCSA recognizes the right of players to play with the club or team of their choice, we cannot condone any coach, player, or parent taking the initiative to recruit players outside their club once the players are registered with a club.

Coaches and players are encouraged to report instances of violations of this policy. Reports of raiding must include the date that the activity happened and will be acted upon with the coaches and clubs involved. It is the intent of BCSA to promote and maintain competitiveness and balance among clubs/teams, avoiding select mentality.

### **MEDICAL RELEASE FORMS**

Coaches or managers must have in their possession at all games a medical release form for each player. It is strongly recommended that they be notarized.

## **HEAD INJURY POLICY**

If a referee sees an incident that involved hard contact involving a player's head, the following procedure should be followed:

1. Stop the match.
2. Summon help.
3. Inform the coach that a head injury occurred.
4. If the player is reentering the match, ask if the player has been cleared by a healthcare professional.
5. If the answer is no, do not allow the entry. If the coach protests, remind the coach that the referee has the authority to terminate the match. If the coach persists, terminate the match.
6. If the answer is yes, request a copy of the clearance that can be filed with the match report to the league. This could be as simple as a phone photo! Then allow the re-entry. If no clearance can be provided, then do not allow the entry. If the coach protests, remind the coach that the referee has the authority to terminate the match. If the coach persists, terminate the match.
7. Should a team official notice such an incident, they need to get the attention of the referee immediately so that the protocol can be followed.
8. Referees are reminded that a USSF report must be filed for any serious injury and any game that does not reach its natural conclusion. Any incident involving hard head contact is deemed to be a serious injury. Reports of this nature are critical and must be filed on the evening of the match with the League Coordinator.
9. When said report is received by the League Coordinator, a message will be sent to the club that sponsored the team that the injured player is participating with through the club president.
10. The club president should use all means available to assure that the player does not return to physical activity until the player has been duly cleared by qualified medical professional. We recommend that the president immediately get the player's pass and hold it until that has been assured.

### **FIELDS**

There must be an active field coordinator for each club. This person will be responsible for all fields used by their club. BCSA reserves the right to use this person as a liaison between the club and the league on issues pertaining to the fields used by the club.

The home team is responsible for the proper preparation of their fields. This means that grass must be cut, fields properly lined, goals properly anchored in all areas, corner flags installed, spectator and technical lines clearly visible, no obstacles on the playing field, and that the field is in playable condition. At game time a referee may declare the field unplayable. If unplayable for above reasons, not acts of God, the home team club is responsible for payment of the referees for the canceled game, reporting to the League Coordinator and scheduling a make-up game.

### **OTHER**

Each club shall have on file a current copy of the BCSA Code of Conduct signed by both the player and their parents. BCSA has the right to sanction a player, coach, or team who has demonstrated misconduct with another individual or organization.

If an occasion should arise that is not fully covered by BCSA Policies and Procedures in any section of the coach's manual, then the league shall have absolute power to decide that case.

---

# Variations from the Laws of the Game - U14 to U19

---

All BCSA games will be governed by FIFA's Laws of the Game except as noted herein.

## Law 1 The Field of Play

*The Technical Area:* All fields must have a technical area drawn for coaches, substitutes, and other team officials. This area must be no closer than 5 yards from an extension of the halfway line (we strongly recommend 10 yards) and must not be any closer than 1 yard from the touch line. It is strongly recommended that this line be 2 yards from the touchline. The maximum length of the technical area is 15 yards. No seating shall be placed closer than 2 yards from the front of the technical area. Minimum marking shall consist of the line parallel to the touchline closest to the field and a side marking at least 1 yard long perpendicular to said line at either end of the line. All coaches, substitutes and team staff must remain inside the technical area during the run of play and shall only leave the technical area to report to the halfway line in order to report as a player into the match.

On fields where a technical area exists for another governing body of soccer, (i.e. High School Federation, NISOA, etc.), said technical area shall be honored for BCSA games. If no technical area can be drawn, a seating area must be provided for each team no closer than 3 yards from the touchline and no closer than 7 yards from an extension of the halfway line. In such cases, team coaches, staff and substitutes are restricted to the area within 1 yard of said designated area on all sides.

**Law 2 The Ball** As FIFA

## Law 3 The Number of Players

11 players on the field. Rosters must be State Certified.

*NOTE: Only the first 18 players who check into the match may participate in that match.*

Substitutions are unlimited, at any stoppage, with the permission of the referee. All substitutions must report to the assistant referee while play is in progress (not after play is stopped). Substitutes must enter the field from the halfway line. Substituted players may leave the pitch across any boundary line. It will not be a cautionable offense if a player does not leave over the closest boundary line. BCSA recommends players leave the field near their team's technical area.

## Law 4 Players' Equipment

The referee or assistant referee shall ensure that each player/team will:

- a) Have shin guards.
- b) Have socks pulled up over shin guards.
- c) Have same color socks and shirts with unique numbers.
- d) Have shirt tucked into shorts.
- e) Not have cut-offs on under shorts
- f) Not have sweatpants on unless weather is inclement.
- g) Not have contrasting sweatshirts on under their shirts unless the weather is inclement. Same color sweatshirt as team shirt is permissible at any time.
- h) Not be wearing jewelry of any kind except required medical or religious wear.
- i) **Note:** Spandex shorts are acceptable as long as they match the shorts.

## Law 5 The Referee

The referee is in charge of the game from the minute he/she arrives at the playing field until he/she physically leaves the

playing area in their vehicle. The referee has the right to censure a player, coach or spectator on the way from their vehicle in the parking lot before the game and until he/she leaves the parking lot in their vehicle.

The referee must check each player's pass at the start of the game for the proper picture and state seal or registrar signature. The referee shall also assure that the passes match the players listed on the original certified roster presented by the team. The referee must also verify that no more than the allowed number of players have checked into the game.

The referee will ensure before the game starts that both teams are located on one side of the field and all spectators are on the opposite side unless the game is being played at a site where spectator seating is physically separated from the technical areas such as a stadium. No participants or spectators are permitted behind the goal lines. Each team and all spectators must stay at least 2 yards behind the touchline. It is recommended that all fields have a spectator line 2 yards off the playing field running parallel to the touchline.

Before each game the coach (or manager) of each team shall pay the referee on the field. A fee schedule is listed in the Referee Section.

**Law 6 The Assistant Referee** As FIFA.

## Law 7 The Duration of the Match

Age	Length of each half	Length of halftime
U19	45 minutes	10 minutes
U16	40 minutes	10 minutes
U14	35 minutes	10 minutes

*Note: Referees are expected to add time as per FIFA. The times listed herein simply reduce the FIFA declared match times from 45 minutes per half as noted.*

Water Breaks are automatically authorized in ALL BCSA matches at a normal stoppage around the mid-point of each half under certain circumstances. Water break must be 4 minutes long. Water breaks must be allowed if the temperature at game time is over 79 degrees Fahrenheit and either of the following conditions are true:

- a. A member of the referee crew requests it.
- b. A team official for either team requests it.

**Law 8 Start and Restart of Play** As FIFA.

**Law 9 Ball in and Out of Play** As FIFA.

**Law 10 Method of Scoring** As FIFA.

If a game, after it starts, is terminated by the referee, it must be determined by BCSA whether it has to be replayed. No fees will be refunded.

If after 15 minutes of the scheduled starting time, one or both teams are not present (7 players constitute a team), the team with not enough players will forfeit the game. (1-0 score)

When 7 players are available for each team and the scheduled starting time has been reached, the game must begin. If a team is under the 7 player limit at game time and they reach that number before 15 minutes, the game must begin.

## Laws 11-17

**Offside, Fouls and Misconduct, Goal Kicks, Free Kicks, Penalty Kicks, Corner Kicks** All as FIFA.

---

## Variations from the Laws of the Game - Under 12

---

### Law 1 The Field of Play

*Technical Area:* As described in Law 1 of the U14-19 Law Variations on page 15. Recommend it be 8 yards from extension of the halfway line.

*Field Markings:* Distinctive lines not more than (5) inches wide. The field of play is divided into two halves by a halfway line. The center mark is indicated at the midpoint of the halfway line. A circle with a radius of eight (8) yards is marked around it.

*Flag posts:* Conform to FIFA.

*Goals:* Conform to FIFA with exception that the goals must be 6 feet high by 18 feet wide or 7 feet high by 21 feet wide.

*PLEASE REFER TO THE FIELD DIAGRAMS ON PAGE 17 FOR CORRECT DIMENSIONS.*

### Law 2 The Ball

No. 4, spherical 25-26"; 11-13 ounces

### Law 3 The Number of Players

A match is played by two teams, each consisting of not more than nine players, one of whom is the goalkeeper. A match may not start or continue if either team consists of fewer than seven players.

*Roster is unlimited and need only be a club certified (i.e. Recreational) roster, however, once 13 players have checked into the match, no further players may check in.*

*Substitutions:* Unlimited at any stoppage with the permission of the referee. Substitutes must enter the field from the halfway line. Substituted players may leave the pitch across any boundary line. It will not be a cautionable offense if a player does not leave over the closest boundary line. BCSA recommends players leave the field near their team's technical area.

### Law 4 The Players Equipment

Conform to FIFA. Non-uniform clothing is allowed based on weather conditions, but uniforms must still distinguish teams and be safe.

### Law 5 The Referee

Conforms to FIFA. USSF Certified referees.

The referee will ensure before the game starts that both teams are located on one side of the field and all spectators are on the opposite side unless the game is being played at a site where spectator seating is physically separated from the technical areas such as a stadium. No participants or spectators are permitted behind the goal lines. Each team and all spectators must stay at least 2 yards behind the touchline. It is recommended that all fields have a spectator line 2 yards off the playing field running parallel to the touchline.

### Law 6 The Assistant Referee

Conforms to FIFA. USSF Certified referees.

### Law 7 The Duration of the Match

Conform to FIFA with the exception of the match being divided into two (2) halves of thirty five (35) minutes each. There shall be a half-time interval of ten (10) minutes. Referees shall add time as per FIFA.

Water Breaks are automatically authorized in ALL BCSA matches at a normal stoppage around the mid-point of each half under certain circumstances. Water break must be 4 minutes long. Water breaks must be allowed if the temperature at game time is over 79 degrees Fahrenheit and either of the following conditions are true:

- A member of the referee crew requests it.
- A team official for either team requests it.

### Law 8 The Start and Restart of Play

Conform to FIFA with the exception that opponents of the team taking the kick-off are at least eight (8) yards from the ball until it is in play.

### Law 9 The Ball In and Out of Play

Conform to FIFA.

### Law 10 The Method of Scoring

Conform to FIFA

### Law 11 Offside

Conform to FIFA.

### Law 12 Fouls and Misconduct

Conform to FIFA with the exception that an indirect free kick is awarded to the opposing team at the center mark if a goalkeeper punts or drop-kicks the ball in the air from his/her penalty area into the opponent's penalty area.

### Law 13 Free Kicks

Conform to FIFA with the exception that opponents are at least eight (8) yards from the ball.

### Law 14 The Penalty Kick

Conform to FIFA with the exceptions that the penalty mark is at ten yards and that players other than the kicker and defending goalkeeper are at least eight (8) yards from the penalty mark.

### Law 15 The Throw-In

Conform to FIFA.

### Law 16 The Goal Kick

Conform to FIFA.

### Law 17 The Corner Kick

Conform to FIFA with the exception that opponents remain at least eight (8) yards away from the corner arc until the ball is in play.



---

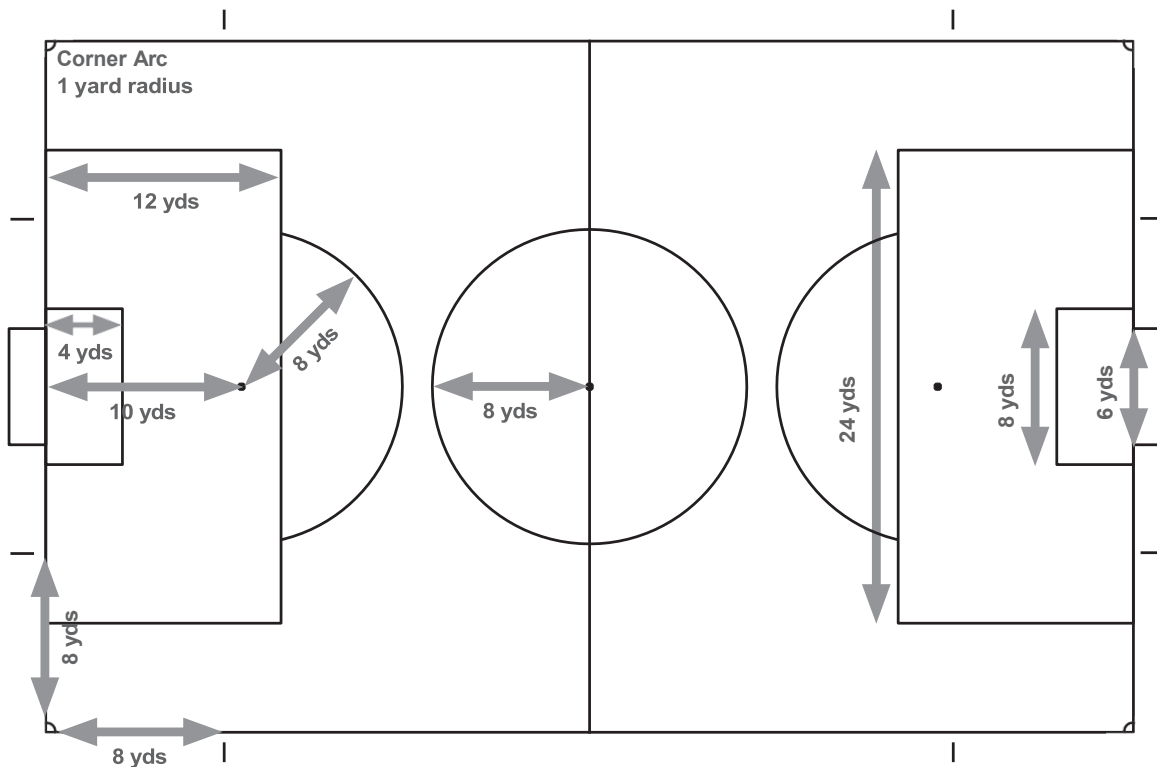
# Variations from the Laws of the Game - Under 10

---

- Law 1 The Field of Play**  
*Technical Area:* As described in Law 1 of the U14-19 Law Variations on page 15. Recommend line starts 5 yards from extension of the halfway line.  
*Field Markings:* Distinctive lines not more than five (5) inches wide. The field of play is divided into two halves by a halfway line. The center mark is indicated at the midpoint of the halfway line. A circle with a radius of eight (8) yards is marked around it.  
*Flag posts:* Conform to FIFA.  
*Goals:* Conform to FIFA with exception that the goals must be 6 feet high by 18 feet wide.  
**PLEASE REFER TO THE FIELD DIAGRAMS ON PAGE 19 FOR CORRECT DIMENSIONS.**
- Law 2 The Ball** No. 4, spherical 25-26"; 11-13 ounces
- Law 3 The Number of Players** A match is played by two teams, each consisting of not more than seven players, one of whom is the goalkeeper. A match may not start or continue if either team consists of fewer than five players. ***There are no roster limits for the Under 10 Age Group HOWEVER only the first 11 players who check in may participate in the match.***  
Player passes are not required. Roster must be club certified recreational roster.  
Substitutions: Unlimited at any stoppage with the permission of the referee. Substitutes must enter the field from the halfway line. Substituted players may leave the pitch across any boundary line. It will not be a cautionable offense if a player does not leave over the closest boundary line. BCSA recommends players leave the field near their team's technical area.
- Law 4 The Players' Equipment** Conform to FIFA. Non-uniform clothing is allowed based on weather conditions, but uniforms must still distinguish teams and be safe.
- Law 5 The Referee**  
Conforms to FIFA. USSF Certified referees.  
Infractions should be briefly explained to the players.  
The referee will ensure before the game starts that both teams are located on one side of the field and all spectators are on the opposite side unless the game is being played at a site where spectator seating is physically separated from the technical areas such as a stadium. No participants or spectators are permitted behind the goal lines. Each team and all spectators must stay at least 2 yards behind the touchline. It is recommended that all fields have a spectator line 2 yards off the playing field running parallel to the touchline.
- Law 6 The Assistant Referee** Not required. May use club linesmen/women if desired. A senior referee will be appointed to each match to act as a mentor.
- Law 7 The Duration of the Match** Conform to FIFA with the exception of the match being divided into two (2) equal halves of thirty (30) minutes each. There shall be a half-time interval of five (5) minutes. Referees shall add time as per FIFA.  
  
Water Breaks are automatically authorized in ALL BCSA matches at a normal stoppage around the mid point of each half under certain circumstances. Water break must be 4 minutes long. Water breaks must be
- allowed if the temperature at game time is over 79 degrees Fahrenheit and either of the following conditions are true:  
a. A member of the referee crew requests it.  
b. A team official for either team requests it.
- Law 8 The Start and Restart of Play** Conform to FIFA with the exception of the opponents of the team taking the kick-off are at least eight (8) yards from the ball until it is in play.
- Law 9 The Ball In & Out of Play** Conform to FIFA.
- Law 10 The Method of Scoring** Conform to FIFA. Neither scores nor standings shall be kept.
- Law 11 Offside** Offside infractions shall not be called.
- Law 12 Fouls and Misconduct** Conform to FIFA with the following exception: If a player deliberately heads the ball, an indirect free kick shall be awarded from the point of the infraction subject to the exceptions in Law 13.
- Law 13 Free Kicks** Conform to FIFA with the exception that all opponents are at least eight (8) yards from the ball.
- Law 14 The Penalty Kick** Conform to FIFA with the exception that the penalty mark is made ten (10) yards from the midpoint between the goalposts and equidistant to them. All players except the keeper and kicker must be 8 yards from the kick, outside the penalty area and behind the penalty mark.
- Law 15 The Throw-In** Conforms to FIFA.
- Law 16 The Goal Kick** Conforms to FIFA with the following exceptions:  
If a goal kick is awarded:  
a) The opposing team **MUST** retreat to their own half of the field.  
b) The kicker **MUST WAIT** until this happens.  
c) The opposing team **CAN ATTACK AS SOON AS THE BALL IS KICKED AND MOVES.**  
d) The goal kick must touch the ground or a player on the kicker's defensive end of the field before crossing the halfway line.  
*For ANY violation of the above, the goal kick MUST BE RETAKEN. Time may be added for these violations.*
- Law 17 The Corner Kick**  
Conform to FIFA with the exception that opponents remain at least eight (8) yards from the ball until it is in play.
- Other Goalkeeper Possession:**  
If the goalkeeper gains possession of the ball with his or her hands:  
a) The opposing team **MUST** retreat to their own half of the field.  
b) The keeper **MUST WAIT** until this happens.  
c) The keeper **MUST DISTRIBUTE THE BALL** with his or her hands.  
d) The opposing team **CAN ATTACK AS SOON AS THE BALL LEAVES THE KEEPER'S HANDS.**  
e) The ball must touch a player or the ground on the defensive half of the field before crossing the halfway line.  
*For ANY violation of the above, the keeper possession MUST BE REPEATED. Time may be added for these violations.*
-

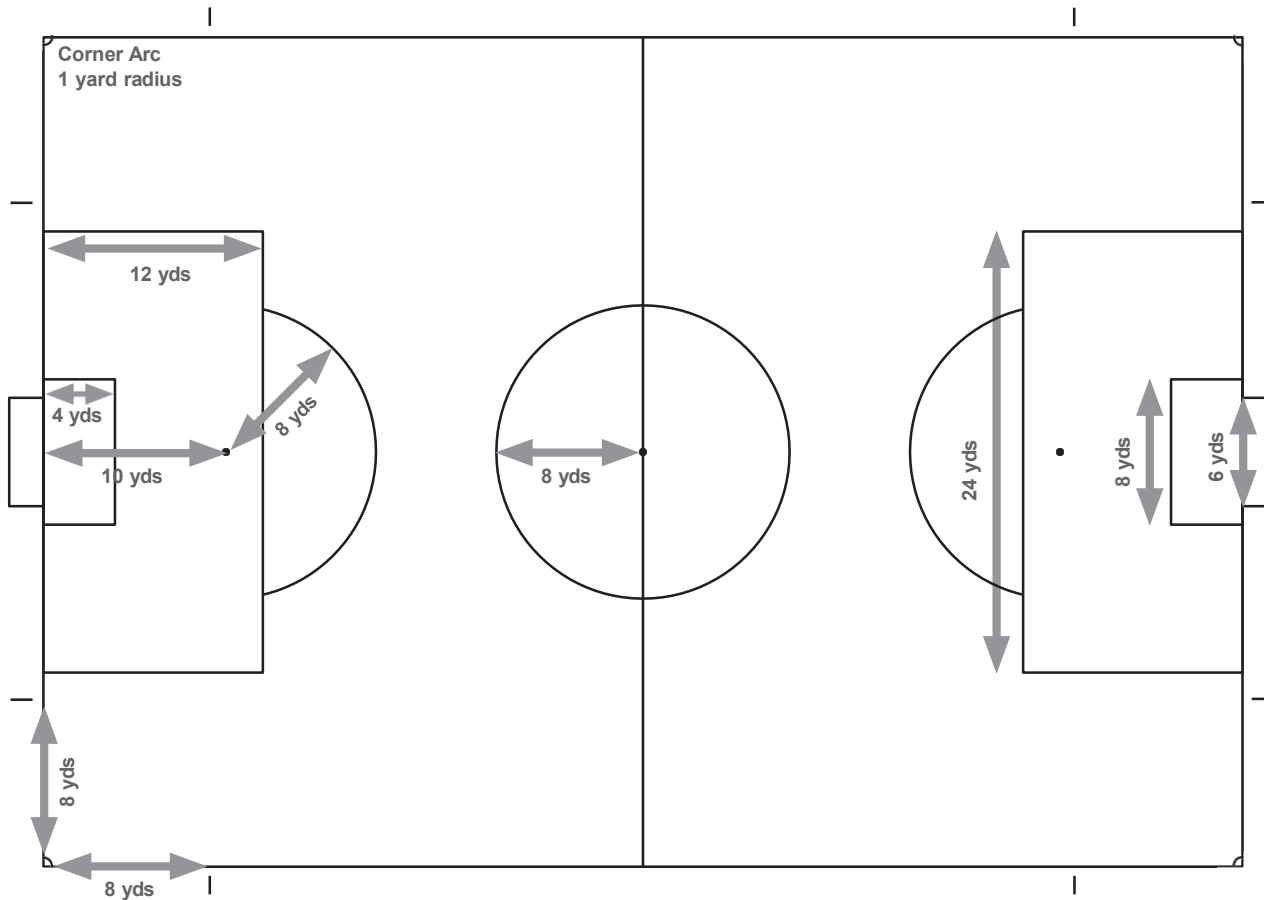
**UNDER 10 FIELD MINIMUM SIZE**

Length - 55 yards Width - 35



**UNDER 10 FIELD MAXIMUM SIZE**

Length - 65 yards Width - 45 yards



---

## Variations from the Laws of the Game - Under 8

---

**Under 8's will play 4v4 without goalkeepers in Festival format.**

**NOTE:**

These "rules" are meant purely as guidelines and are not cast in stone! Remember, at this level our interest is teaching the basic skills required to play the game!

**Law 1 The Field of Play**

Length: 40-50 yards  
Width: 20-30 yards  
Goal Area: 3 yards from each post and 3 yards onto field of play.  
Center Circle: 5 yard radius.  
Corner Arc: 2 ft radius.

**Markings**

Discs or paint may be used.

**Goals**

Pop-up goals, cones or flags may be used.  
Largest goal is 6 foot tall by 12 foot wide.

**Law 2 The Ball**

Size 3 ball.

**Law 3 Number of Players**

**A. Field Players**

There shall be always four players on the field. There shall be no goalkeeper.

Teams may be girls, boys or mixed.

**B. Roster Players**

Maximum number of players on the roster is unlimited. Club certified recreational roster is required.

**C. Substitutions** On-the-fly.

**D. Playing Time**

Coaches are encouraged to maximize every player's time.

**E. Registration**

All players must be registered, and the coach must always have a club certified roster in his/her possession. All coaches must also have passes. Home field coordinator will check to be certain that all paperwork is in order.

**Law 4 Player's Equipment**

- A. T-Shirts/jerseys/scrimmage vests of similar color. Shirts should have numbers.
- B. Matching socks.
- C. Footwear
- D. **Shin-guards are mandatory.**
- E. Players shall not wear anything which is dangerous to another player or to themselves (no jewelry, earrings, watches or metal cleats).

**Law 5 Referees**

No referees shall be used. Coaches are encouraged to facilitate these games by coaching on the field of play.

**Law 6 Assistant Referee**

No Assistant referees shall be used.

**Law 7 Duration of the Game**

Games may be 15 or 20 minutes long as ordained by the home field coach. Players shall play a maximum of 1 hour and 30 minutes in several games with adequate breaks for rest/water.

**Law 8 The Start of Play**

Opponent must be six (6) yards from the ball when kick-off or indirect kick is in process.

**Law 9 Ball In and Out of Play**

Conform to FIFA Laws of the Game.

**Law 10 Method of Scoring**

Conform to FIFA Laws of the Game. No score or standings shall be kept.

**Law 11 Offside**

Offside shall not be enforced.

**Law 12 Fouls and Misconduct**

Coaches/facilitators must explain all infractions to the offending player. Heading the ball is prohibited: Restart is an IFK to the opposing team.

**Law 13 Free Kicks**

All free kicks are INDIRECT.

**Law 14 Penalty Kick**

*No penalty kicks* are to be taken during these games.

**Law 15 Throw In**

Conform to FIFA Laws of the Game.  
One rethrow must be allowed if incorrect throw occurs with brief correction by the referee.

**Law 16 Goal Kick**

- A. Conform to FIFA Laws of the Game.
- B. Goal kick may be taken from any point on the goal line.
- C. Opponents must be at least six (6) yards away from the ball.

**Law 17 Corner Kick**

- A. Conform to FIFA Laws of the Game except they are INDIRECT.
- B. May be taken from any point within 1 yard of the corner.

***The game is for the children.***

***Let them learn and play, but most important ....***

***... let them have fun!***

---

---

## Cautions and Send Offs

---

All rules covering cautions and send offs are covered by the FIFA Laws of the Game. BCSA has also added to these laws with additional rules as follows:

1. For purposes of these rules, a **match** is considered to be the time from when participants begin to arrive at the field until the field and its surroundings (including the parking area) is cleared of all participants at the conclusion of playing time. This is generally considered to be 30 minutes prior to the scheduled starting time of the match until 30 minutes after the match completes. A **participant** is any player or substitute on either team, and all technical staff affiliated in any way with that team. An **adult** is defined as a person who is 21 years of age or older. The **officiating crew** is all certified officials and mentors who were assigned to the match. A **spectator** is defined as anyone that is not a participant or member of the officiating crew that is attending a BCSA match.
2. All suspensions carry over from one season to the next season if the penalty was not served during the season when it was imposed.
3. If a player is sent off during any match, they must sit out the remainder of that match (while their team plays short) plus they cannot be within sight nor sound of that team's next match at that level of competition. In NYSWYSA, level of competition is defined as any game in which that player would play with the pass that he was playing with when the send off was issued. The only competition that is specifically excluded is the USYSA National Championship series. The sit out must be served in whole matches where the total playing time is at least the same amount of time as the full BCSA game in which they were suspended. A player sent off may remain with their team in the technical area but must remain silent for the remainder of the match and must not confront any other participant including any member of the referee crew until the match is complete.
4. If a substitute is sent off, they cannot participate further in the match. A substitute sent off may remain with their team in the technical area but must remain silent for the remainder of the match and must not confront any other participant including any member of the officiating crew until the match is complete.
5. If an adult participant is sent off, they must leave the sight and sound of the field and must not confront either the officiating crew or any other participant until the match is complete. They must also not be within sight or sound of that team's next match.
6. If a youth participant is sent off, they may remain with their team in the technical area but must remain silent for the remainder of the match and must not confront any other participant including any member of the referee crew until the match is complete. They must also not be within sight nor sound of that team's next match.
7. Any person sent off or dismissed from a BCSA game will result in that person's affiliated member club being fined \$75 for the first occurrence during a season and \$200 for each subsequent occurrence during the season, payable to BCSA. The fine must be paid before the participant can be within the sight or sound of any BCSA match.
8. Failure to meet any of the above criteria will result in that participant being immediately expelled from BCSA, fined the expulsion fee and will be considered as having committed a second sending off offense during the same season.
9. Any person who is sent off or dismissed more than once during the season shall be expelled from the league until they request and appear at a hearing before a review committee appointed by the President consisting of three or more members. This review committee shall have the power to suspend the person from further participation or reinstate that person's ability to participate in the league. Failure to request or appear at such a hearing shall result in immediate perpetual suspension.
10. Any send off issued will result in that person's State Association pass being sent to the League Coordinator. The pass will be returned after that person has sat out the suspension and paid all fines to BCSA. It is the responsibility of the club to see that this fine is paid to the BCSA Treasurer.
11. Strong or vulgar language is punishable for all participants with a send off.
12. Any participant who is sent-off or removed from a match shall not communicate with anyone at any match from which they are banned using any means, electronic or otherwise. If it is found that they did, it will be considered a second sending off offense.
13. Every member of the organization is responsible for the actions of its coaches, players, officials, and spectators during all matches.
14. Each coach during the game is responsible for the verbal and physical actions of its team, technical staff and spectators. All players and youth coaches who are sent-off or dismissed from a match shall not be required to leave the team side of the field but must remain silent until the match is complete and all persons in attendance have left the field and its surroundings including the parking area. All said persons are still under the authority of the adult who is present on the sideline and said adult is solely responsible for their actions. *If a spectator is ejected, the team shall be fined \$75 for each occurrence. If a game is terminated due to the inability of the coach to control the team's spectators, said coach shall automatically be considered to have been sent off and all send off fines and penalties shall be applied to said coach.*
15. There will be a maximum of 3 non-players allowed for each team in the technical area. This includes coaches, assistants, managers, photographers, spectators, trainers and parents. ALL SUCH PERSONS MUST HAVE A VALID USYSA STATE ASSOCIATION RISK MANAGEMENT PASS. IF SUCH A PERSON IS UNDER THE AGE OF 21, SAID PASS MUST IDENTIFY THAT PERSON AS BEING UNDER THE AGE OF 21.
16. If participant in a match assaults a referee or an official referee assistant, the state association has sole right and authority to adjudicate the matter. Any such person will be expelled immediately from participating in any BCSA activity for a minimum of one year and the President or League Coordinator of BCSA, having information about such assault will, on completion of an investigation and determination that an assault did occur, immediately notify the proper state association authorities and give them all of the information BCSA has compiled as well as actions taken against said person by the league.
17. The President and/or League Coordinator of BCSA retains the right to take additional actions against any participant who has been reported by match officials to the league of irresponsible or inappropriate behavior based on the severity or volume of the actions reported.

---

# Coach and Manager Responsibilities

---

## Before the Season:

1. Read this book to familiarize yourself with proper protocols and policies of the league. BCSA will not be responsible if you are unaware of the appropriate procedures and responsibilities you have assumed as a coach or manager.
2. Attend the BCSA Coach's Meeting to be brought up to date on recent changes in the soccer world.
3. Just after the Coaches' Meeting, you will get the Coach's Control Panel access code. Use that code to review your schedule. Within the two-week grace period which follows the BCSA Coach's meeting, make all changes needed based on school vacations, trips, and concerts, baseball, or any other foreseeable conflicts there might be. Immediately call to initiate all changes. **Don't wait till the last day** of the grace period to call because it takes a few days to work out any changes. Don't rely solely on email!
4. In concert with your club registrar, ensure that all players and coaches are properly registered, have a proper roster as well as the players' and coaches' passes as required for games, and have players' medical release forms properly filled out and on hand.

## During The Season:

1. Contact the opposing coach two or three days ahead of your scheduled game to confirm the time and place.
2. If the coach is unavailable for the game arrange for an assistant coach to coach the team. There must be at least one adult at each match with a coach's pass.  
*Note: Each coach on the team side of the field must have a coach's pass so make sure you have more than one adult designated to help with a team. No team will be allowed more than 3 adults on the player's side of the field. Please comply with the referee when they enforce this rule.*
3. As home team, along with your club's Field Coordinator, ensure that goals are secured, corner flags are in place, fields are lined properly, and the field is playable.
4. Make sure that you remember to bring your required passes, rosters and medical releases to all games.
5. Ensure that all players are properly dressed with shin guards and uniforms.
6. Have first aid supplies available, know the location of the closest telephone, and know the telephone number of the nearest emergency squad.
7. Be responsible for the conduct of the coaches, players, parents, and spectators. Have a team-parent-coaches meeting to discuss appropriate conduct and team responsibilities.
8. Show respect to all officials of the game, regardless of the quality of the game they are officiating.
9. Each game above the U10 level: Both coaches must file a game report online on the Coach's Control Panel by 9:00 PM each Monday. A five-dollar fee will be assessed for failing to make a timely report. *The coach should assume this responsibility-not the team manager and this address should NOT be shared with parents! If the score reported*

*is incorrect AND changes the outcome of the match, please report the discrepancy to the League Coordinator who will verify the score with the referees on the match. If the score is incorrect and the outcome of the match was not changed by the incorrect score, no action should be taken. Point differential, goals for or goals against have no bearing on the BCSA standings.*

10. Game Rescheduling after the grace period: It is the responsibility of the coach who requests the cancellation or the home team coach in case of weather related cancellations to initiate mid-season rescheduling. Please note-weather related rescheduling can only be initiated by the club field coordinator by closing the field by 6pm of the night prior to the match or by the referee at the game site.
  - a) If a game is being canceled after the grace period ends for some reason other than weather related, the coach requesting cancellation must obtain agreement from the opposing coach on cancellation. **PLEASE NOTE: NO GAME MAY BE CANCELED LESS THAN 5 DAYS PRIOR TO THE ORIGINALLY SCHEDULED GAME ONCE THE 2 WEEK GRACE PERIOD IS OVER without prior consent of the president of BCSA UNLESS THE CANCELLATION IS DUE TO CUP PLAY.** A request for a cancellation less than 5 days prior to any match will result in a forfeit unless the specific approval of the league president is granted. Such a change will only be granted in the case of a major emergency which would force your team to show at a game site with less than 7 players (U10 - less than 5 players). **This request must be made by your club's president**-do not initiate contact with the president of BCSA on your own accord.
  - b) The coach requesting cancellation must notify the Age Group Coordinator and League Coordinator at least five (5) days before the date of the canceled game. Three changes per team per season is the limit for rescheduling after the grace period. This limit does not apply to games being rescheduled due to cup play or weather related cancellations.
  - c) The coach should contact the Club Field Coordinator before contacting the opposing coach to find possible playing times for rescheduling the game. He/she should have four or five options to present to the opposing coach.
  - d) The coaches must notify the League Coordinator and Age Group Coordinator at least seven (7) days in advance of your make-up game or be prepared to pay a fine as outlined under "Referees Fees" in this book.
  - e) All canceled games must be rescheduled within two weeks of the original cancellation date, or the game may be deemed a forfeit.
  - f) All game reschedules consist of a game cancellation and a game scheduling. Either or both of these actions may result in a fine being charged.
11. Report to the Age Group Coordinator each game that is played with fewer than 3 officials.
12. Periodically check the BCSA Web Site ([www.broomsoccer.org](http://www.broomsoccer.org)) to be certain that your team's record is correct in the standings. If an inaccuracy is found, report it immediately to the League Coordinator. *The official schedule of the BCSA is the schedule posted at the Coaches Control Panel and not the public schedule on the website as all changes will not be reflected there as they happen.*

---

## Age Group Coordinator Responsibilities

---

The Age Group Coordinator (AGC) is the primary communication link between every team's coach/manager and the League. During the course of the season, the Age Group Coordinator is often the only contact that a team will have with the BCSA. The success and the overall experience for each and every team is a direct result of the success of that age group's AGC. Frequent contact (e-mail or phone) with each of your coaches enhances this experience immensely for them and makes the job of the AGC that much easier.

### Before the Season:

#### Division set-up

1. Once the last date to enter or withdraw a team has come and passed, the AGC will be given access to the Control Panel online. This will allow the AGC's to individually look at the team entries in their age group. The first task is to set up divisions which must be accomplished within a week of receiving access. To be safe, please assure that all email conversations with coaches in your division are saved until August 15th of each year in case there is a protest.
2. Phone calls to coaches may be made by the AGC to assist with the set-up of divisions within age groups. Reserve the lowest division for the younger teams (unless they request to play up). Team division requests are to be used as a guide but may be changed by the AGC (contact the coach with an explanation if you move their team between divisions). No division can have fewer than 5 teams nor more than 9 teams without the express consent of the League Coordinator. In lower-level divisions, please consider the driving distance between clubs.
3. Obtain secondary e-mail addresses and phone numbers for each team in your age group. This is an invaluable tool throughout the year and will save you time!

#### Scheduling

4. Once the League Coordinator has approved your divisions, the AGC can proceed and create the schedule. It is the AGC's responsibility to create the initial schedules for each division within their age group assuring that each team only plays on weekends and only one game per day. Only dates are needed at this stage except when individual teams have special requests (no games prior to 4:00 PM for example). This initial scheduling must be completed within 1 week of having your divisions approved (2 weeks prior to the Coach's Meeting.)
5. Refer to the team entries to identify conflict dates for teams in your age group. Make every attempt to schedule around these dates.
6. After all AGCs have submitted their initial schedules, the initial league schedule will be finalized by the League Coordinator and published online. The schedule is available both publicly and via the Control Panel.

#### Rescheduling during "2-week free period".

7. After the schedules are distributed, each team has 2 weeks to freely change any game on their schedule. Document all calls/e-mails with these requests. It's the responsibility of the team requesting the change to: a) come up with a new date and time that is acceptable to their opponent; b) contact the field coordinator to insure that the field is available for the new date/time; and c) send an email to the AGC copying the opposing coach and the League Coordinator once has been finalized. Whomever makes the change on the Control

Panel (either League Coordinator or AGC) should let both coaches know that the change has been made.

### During The Season:

#### Game cancellations and reschedules

9. Once the "2 week free" schedule period is over, rescheduled games are limited. Each team is allowed 3 additional changes provided they contact the AGC at least 2 weeks prior to the game. Games rescheduled due to cup play or field closures do not count toward the 3-game limit and may be canceled with less than five (5) days' notice. The AGC or League Coordinator will make the change in the control Panel. **THIS MUST BE DONE AS SOON AS THE GAME CANCELLATION IS RECEIVED- IRREGARDLESS OF WHETHER OR NOT A RESCHEDULE DATE HAS BEEN ESTABLISHED.** Note for your records which team requested the cancellation. It might be important later! Once the coach who requested the change has a date which is agreed upon by the opposing team and field availability, they must contact the AGC and League Coordinator once again to set the reschedule date. Coaches must set this rescheduled date within 2 weeks of the date of the cancellation was reported to the league.
10. The AGC should follow-up with both coaches and the League Coordinator to make sure that the game has been rescheduled within the allowable time. If one or both coaches are unable to come to an agreement, this situation must be reported to the League Coordinator who will take appropriate action.

#### Communications

11. Document any concerns or problems (fields, referees, etc.) and be certain that the League Coordinator is made aware of any issues that arise.
12. Upon receipt of a protest or appeal letter, immediately notify the BCSA League Coordinator.

---

## Club Field Coordinator Responsibilities

---

Each club is responsible for its fields and must have one individual who is assigned as the Field Coordinator. The club Field Coordinator will be responsible for all fields within their club. Please note that the Field Coordinator is not an officer of BCSA by virtue of his or her assignment to this task. The Club Field Coordinator is a club position and therefore does not come under the direct control of BCSA. It is the responsibility of each coach to know who their club field coordinator is. BCSA does not maintain a list of these people.

### Before the Season:

1. Assure that all fields used for spring play by your club are properly lined and that goals are securely anchored. Assure that nets used are in reasonably good condition and are tied to the goal in such a way that balls cannot pass into the goal by any method other than between the side posts and under the cross bar. This may require personal inspection of one or more particular locations should conditions or circumstances warrant it. If your club may use an alternate field, assure that it conforms to all USSF Guidelines and USYSA standards.
2. The club Field Coordinator must provide the League Coordinator with a Field Availability Form (supplied by BCSA) which will detail:
  - a) Each field and the age groups that will play on the field.
  - b) List of dates when the fields are not available for spring league play.
  - c) A map, directions, and an address for each club field.

**During the Season:**

3. The Club Field Coordinator should maintain a listing of all games being played on each field as well as a list of the telephone numbers of each team coach or manager who will use the field. It is the Club Field Coordinator's responsibility to assure that multiple games are not scheduled on any given field at the same time.
4. The Field Coordinator shall work within the individual clubs to assist them in developing field maintenance programs and staffing. This will ensure consistent field status, limit complaints against fields, and prevent injuries to players and referees.
  - a) Each field must be safe. All unsafe conditions must be corrected upon inspection of the field or if a complaint about the field is filed with the League Coordinator, Club President, or Club Field Coordinator.
  - b) The height of the grass must be appropriate to the game of soccer. Regular mowing should be scheduled and is the ultimate responsibility of the Club Field Coordinator.
5. During the season complaints about fields should be directed to the League Coordinator **and** the Club President. These complaints will be forwarded to the Club Field Coordinator. He or she should analyze the complaint, inspect the field, make a decision on the complaint and advise both the Club President and League Coordinator of the action which will be taken on the complaint.
6. The Field Coordinator shall confer with the League Coordinator when consistent complaints or refusal to remedy complaints about a particular field or fields arise.
7. The Field Coordinator shall advise League Coordinator with regard to terminating the use of any field used by his or her club. The Field coordinator should advise the League Coordinator about what actions may be necessary (moving game sites, etc.) should a field be terminated.
8. The home team and Club Field Coordinator are responsible for lining the field, corner flags, playable nets, and player and spectator lines on both sides of the field throughout the season.
9. The club field coordinator should be prepared to inspect the field on a regular basis.
10. **FIELD CLOSURES can ONLY be determined by the Club Field Coordinator.** These must be reported to the league coordinator no later than 8pm of the evening prior to the match taking place and should be solely based on the playability of the field at that point in time, not potential weather threats. If the Club Field Coordinator should deem that the field is unplayable, it is his/her responsibility to contact each of the home teams who are scheduled to use the field that day. **It is the team manager or coach's responsibility to immediately contact the manager or coach of the visiting team to inform them of this development and work with them to get the game rescheduled.**

## Referees

1. All Spring League games will be officiated by members of the USSF referees' group in their respective area.
2. Only currently USSF certified officials shall be used. At all times, in matches above the U10 level, a 3-person system shall be assigned as required by FIFA. If less than 3 registered referees are available, then lines people can be chosen from those present at the match.
3. Both referees and coaches must remain calm when disputes arise concerning enforcement of these laws.
4. Complaints about officiating should be included in the game report filed by the coaches after each game.

## Referee Fees and Team Fines

**REFEREE GAME FEES (Per Team)**

Age Group	3Refs	2Refs	1Ref
Under 19	\$94.00	\$75.00	\$62.00
Under 16	\$84.00	\$67.00	\$55.00
Under 14	\$70.00	\$55.00	\$46.00
Under 12	\$58.00	\$46.00	\$38.00
Under 10	Referee and Mentor..... \$48.00 per team		
	Referee only ..... \$24.00 per team		

**LATE GAME CANCELLATION FEES**

*Paid by team or teams responsible for cancellation.*

Age Groups	1-24 Hours	25-48 Hours	49-72 Hours	73-96 Hours	97-120 Hours
U19	\$188.00	\$150.40	\$112.80	\$94.00	\$75.20
U16	\$168.00	\$134.40	\$100.80	\$84.00	\$67.20
U14	\$140.00	\$112.00	\$84.00	\$70.00	\$56.00
U12	\$116.00	\$92.80	\$69.60	\$58.00	\$46.40
U10	\$96.00	\$76.80	\$57.60	\$48.00	\$38.40

**LATE GAME SCHEDULING FEES**

Age Group	1-24 Hours	25-48 Hours	49-72 Hours	73-96 Hours
U19	\$75.20	\$56.40	\$37.60	\$18.80
U16	\$67.20	\$50.40	\$33.60	\$16.80
U14	\$56.00	\$42.00	\$28.00	\$14.00
U12	\$46.40	\$34.80	\$23.20	\$11.60
U10	\$38.40	\$28.80	\$19.20	\$9.60

*Please Note: All game reschedules consist of a game cancellation and a game scheduling. Either or both may involve a fine or fee.*

**Failure to make a timely game report \$10.00**  
 Charged to any team not making a game report by 9pm Monday following game date. (U12-19 only)

**Forfeit \$100.00**  
 Charged to team unable to prove to the assigned referee that they are fielding a legal team or who do not show up at a scheduled game site within 15 minutes of game time. *All forfeits are also considered game cancellations.* (U10-19 only)

**Early Withdrawal / Expulsion \$200.00**  
 Charged to any team which withdraws or is expelled from the league after the withdrawal deadline but before completing the season. Two forfeits in a season will result in an expulsion. (U10-19 only)

**Send Off \$75.00 1st time / \$200.00 subsequent in season**  
 Charged to any team that has an affiliated coach or spectator asked to leave a game site or player who is shown a red card. This fine is per person *and* per occurrence.

**Failure to produce an original certified roster \$20.00**  
 Charged to any team which shows up at a game site with players' passes but no original certified roster. (Under 12-19 only, for Under 10, see Forfeit.)

**NOTE: All fines are due when incurred and must be paid by check made out to "BCSA" and mailed to the League Treasurer with a note indicating team name (and player name in case of send off) and game number. Returned checks will incur a \$50 service fee.**

---

# Assault, Abuse and Harassment

---

## A GUIDE FOR REFEREES

---

### WHAT IS ASSAULT, ABUSE & HARASSMENT?

**Referee assault** is an intentional act of physical violence at or upon a referee. An “intentional act” shall mean an act intended to bring about a result which will invade the interests of another in a way that is socially unacceptable. Unintended consequences of the act are irrelevant. Assault includes, but is not limited to the following acts committed upon a referee: hitting, kicking, punching, choking, spitting on, grabbing or bodily running into a referee; head butting; the act of kicking or throwing any object at a referee that could inflict injury; damaging the referee’s uniform or personal property, i.e. car, equipment, etc.

**Referee abuse** is a verbal statement or physical act not resulting in bodily contact which implies or threatens physical harm to a referee or the referee’s property or equipment. Abuse includes but is not limited to the following acts committed upon a referee: using foul or abusive language toward a referee that implies or threatens physical harm; spewing any beverage on a referee’s personal property; or spitting at (but not on) the referee.

**Referee harassment** is a pattern of multiple verbal statements or gestures made to a referee which are socially unacceptable and/or demeaning.

### WHAT SHOULD YOU DO?

**In the case of assault** walk away from the immediate threat. As soon as practicable, get the names of witnesses. Call the police or go to the police station and swear out a warrant for the arrest of the person who committed the assault. Your attorney will be the attorney for the local jurisdiction in which you file charges. This will not cost you anything. Make good notes as to what happened, file a game report with the league and the State Referee Administrator and confer with the attorney as to what happened. Appear in court and at any soccer hearings which are convened on the day assigned.

Assault is unacceptable. PERIOD. This cannot be tolerated.

**In the case of abuse or harassment**, make certain you have enforced the laws of the game against the individual committing the act (i.e. dismiss them!) Write a clear report of everything that happened. Be precise. Don’t make recommendations. Just the facts. File a copy of this report with your local referee administrator, the league and the State Referee Administrator. If a hearing is convened, attend the hearing and testify as to what happened.

**PLEASE TAKE ALL APPROPRIATE ACTIONS. WE DON’T WANT THIS HAPPENING TO SOMEONE ELSE BECAUSE YOU DIDN’T!**

## A GUIDE FOR PLAYERS, SPECTATORS AND COACHES

---

### WHAT COULD HAPPEN TO YOU?

#### **In the case of assault:**

You WILL be arrested.

You WILL need an attorney.

You WILL be convicted.

You WILL either do jail time, pay fines, or do community service.

Your name WILL appear in the local news.

#### **Your soccer life will also change.**

USSF Mandates minimum suspensions to be enforced nationally for any assault or abuse.

These can be for up to 5 years or longer! These cases are typically handled by the state association.

You will also face league fines and sanctions.

#### **In the case of harassment,**

the league will take significant action suspending you from numerous matches and charging you fines. You may also endanger future involvement with the league.

***IT IS JUST A GAME!  
STOP! THINK! CALM DOWN!***

---

# NYSW Zero Tolerance Policy

---

To help prevent physical assault and verbal abuse in the leagues and clubs within the New York State West Youth Soccer Association (NYSWYSA, or Association); the Association has adopted a ZERO TOLERANCE POLICY. This policy applies to all coaches, players, parents, spectators and other supporters and referees effective immediately. Abusive and obscene language, violent play/conduct, fighting and other behavior (including, but not limited to sarcasm, taunting, etc.) deemed detrimental to the game between the above mentioned groups will not be tolerated. The ultimate responsibility for the actions of coaches, players and spectators resides with the member clubs.

NYSWYSA is and will always be, a place where all races, genders, ethnicities and sexual orientations can come together and feel welcome to enjoy the game of soccer, compete and grow together. Our organization maintains the highest standards and all our players, parents and coaches are expected to demonstrate the utmost level of respect and sportsmanship.

The use of racial epithets and offensive language has no place in NYSWYSA. Use of racial epithets and other insensitive language is especially harmful for members of underrepresented groups. Permitting such language is incongruous to the culture of respect, dignity and belonging we strive to create for all athletes, staff and volunteers who support our youth.

It is the responsibility of the coaches to provide referee support and spectator control, and it is the responsibility of the member clubs to provide instructions to their coaches on how they are expected to carry this out. This policy applies before, during and after the game at the soccer field and its immediate surrounding areas.

## Parents & Spectators

No parent or spectator shall persistently address the referee or assistant referees at any time. This includes, but is not limited to:

- a. Parents and spectators shall not dispute calls during or after the game.
- b. Parents and spectators shall not make remarks to the referee(s) or advise the referee(s) to watch certain players or attend to rough play.
- c. Parents and spectators shall never yell at the referee(s), including criticism, sarcasm, harassment, intimidation or feedback of any kind before, during or after the game.

The only allowable exceptions to the above are:

- a. Parents and spectators may respond to a referee who has initiated a conversation, until such time as the referee terminates the conversation.

- b. Parents and spectators may point out an emergency or safety issues, such as a player apparently injured on the field or observed fighting.

Additionally, parents and spectators shall not make derogatory comments to players of either team.

## Penalties (Parents & Spectators)

In the opinion of the referee, depending on the severity of the offense, the referee may take any of the following actions:

- a. The referee may issue a verbal warning to the coach of offending party's team.
- b. The referee may stop the game and instruct the coaches to direct the parent / spectator to leave the field.
- c. The referee may abandon the game if the parent/ spectator does not leave the field.

## Players

The conduct of the players is governed by the Laws of the Game as stated by FIFA and USSF. The Laws themselves describe penalties associated with violating the Laws of the Game.

Additional penalties for players who engage in misconduct may be established by the club and/or league but may in no case be less severe than penalties established by FIFA, USSF, or NYSWYSA.

## Coaches, Assistant Coaches & Bench Personnel

It is the responsibility of all coaches to maintain the highest standards of conduct for themselves, their players and supporters in all matches. Failure to do so undermines the referee's authority and the integrity of the game resulting in a hostile environment for players, the referee(s), coaches, assistant coaches, bench personnel and spectators. As role models for all of the participants and spectators, coaches participating in a New York State West Youth Soccer Association sanctioned event are expected to be supportive of, and to acknowledge the effort, good play and sportsmanship on the part of ALL players from either team in a contest. By example, coaches, assistant coaches and bench personnel are expected to show that although they are competing in a game, they have respect for their opponent, referees and spectators at all times. The New York State West Youth Soccer Association will not tolerate negative behavior exhibited either by demonstrative actions and gestures, or by ill-intentioned remarks, including those addressed toward the referees or members of an opposing team.

Coaches exhibiting hostile, negative, sarcastic or otherwise

---

ill-intended behavior toward referees, opposing players or coaches will be subject to sanction by the match official. Additional sanctions may be imposed by the club that the coach or assistant coach represents, the league that the match is being played under, or as allowed by New York State West Youth Soccer Association policies after a review of the match report.

- Coaches shall not interact directly or indirectly with the coaches or players of the opposing team during the game in any manner that may be construed as negative, hostile, or sarcastic either by way of demonstrative actions and gestures or by ill-intentioned remarks.
- Coaches shall not offer dissent to any call made by the referee(s) at any time.
- Coaches are not to address the Referee(s) during the game except to:
  - a. Respond to a referee who has initiated a conversation.
  - b. Point out emergency or safety issues.
  - c. Make substitutions.
  - d. Ask the referee, “What is the proper restart (i.e. direction and Indirect Free Kick or Direct Free Kick)?
  - e. Ask for the time remaining in the half.
- Coaches are allowed to ask a referee after a game or during the halftime interval, in a polite and constructive way, to explain a law or foul, but not judgment calls made in the game.
  - a. Polite and friendly concern can be exchanged with the referee. If the polite tone of the conversation changes, the referee may abandon the exchange at any time.
  - b. Absolutely no sarcasm, harassment or intimidation is allowed.

NOTE: It is recommended that coaches or other team members do not engage in any conversation with the match official once the match has concluded.

### **Penalties (Coaches, Assistant Coaches & Bench Personnel)**

In the opinion of the referee, depending on the severity of the offense, the referee may take any of the following actions:

- a. The referee may issue a verbal warning to the offending coach, assistant coach or bench personnel.
- b. The referee may eject the offending coach, assistant coach or bench personnel. Once ejected, the individual will be required to leave the field immediately.
- c. The referee should abandon the game, if the coach, assistant coach or bench personnel do not leave the field or any immediate adjoining area after having

been instructed to do so.

Additional penalties associated with the ejection of a coach, assistant coach or bench personnel may be assessed by the local club or league which sanctioned the match in accordance with their documented policy. These penalties may be no less stringent than sanctions as may be imposed by NYSWYSA following their review, if conducted, of the incident.

All cases of alleged abuse or assault of a referee shall be reported to the NYSWYSA State Office and State Referee Administrator within 48 hours of the match that engendered said behavior. NYSWYSA will then conduct a verification of the complaint and subsequent actions as required by applicable sections of USSF Policy in effect at the time of the incident. Although NYSWYSA is continually bound by USSF Policy and its various revisions, definition of referee abuse and referee assault found in USSF Policy 531-9 as of the creation date of this Zero Tolerance Policy is offered by way of information as follows:

### **Referee Abuse**

- (a) Referee abuse is a verbal statement or physical act not resulting in bodily contact which implies or threatens physical harm to a referee or the referee’s property or equipment.
- (b) Abuse includes but is not limited to the following acts committed upon a referee: using foul or abusive language toward a referee that implies or threatens physical harm; spewing any beverage on a referee’s physical property; or spitting at (but not on) the referee.

### **Referee Assault**

- (a) (i) Referee Assault is an intentional act of physical violence at or upon a referee.  
(ii) For purposes of this Policy, “intentional act” shall mean an act intended to bring about a result which will invade the interests of another in a way that is socially unacceptable. Unintended consequences of the act are irrelevant.
- (b) Assault includes, but is not limited to the following acts committed upon a referee: hitting, kicking, punching, choking, spitting on, grabbing or bodily running into a referee; head butting; the act of kicking or throwing any object at a referee that could inflict injury; damaging the referee’s uniform or personal property, i.e. car, equipment, etc.

---

**BCSA STRONGLY SUPPORTS THIS POLICY!**

---

---

---